



Deutscher  
Aero Club e.V.  
Sportfachgruppe Modellflug

# The Slopes

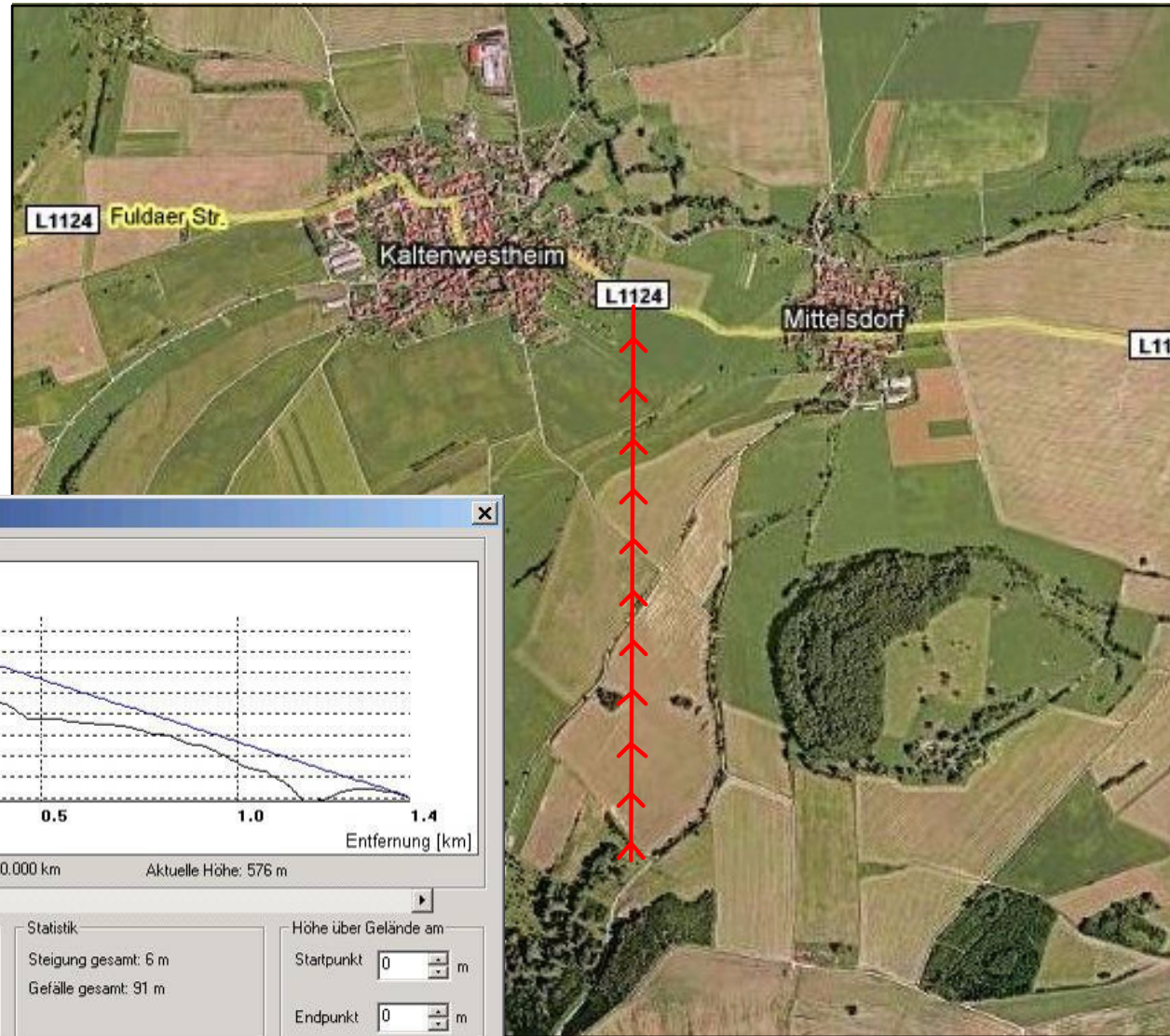
**FAI World Championships  
for Free Flight Model Aircrafts  
F1E – Gliders with Automatic Steering  
Juniors & Seniors  
September 12th – 18th, 2009, Rhön, Germany**



# Slope North 01

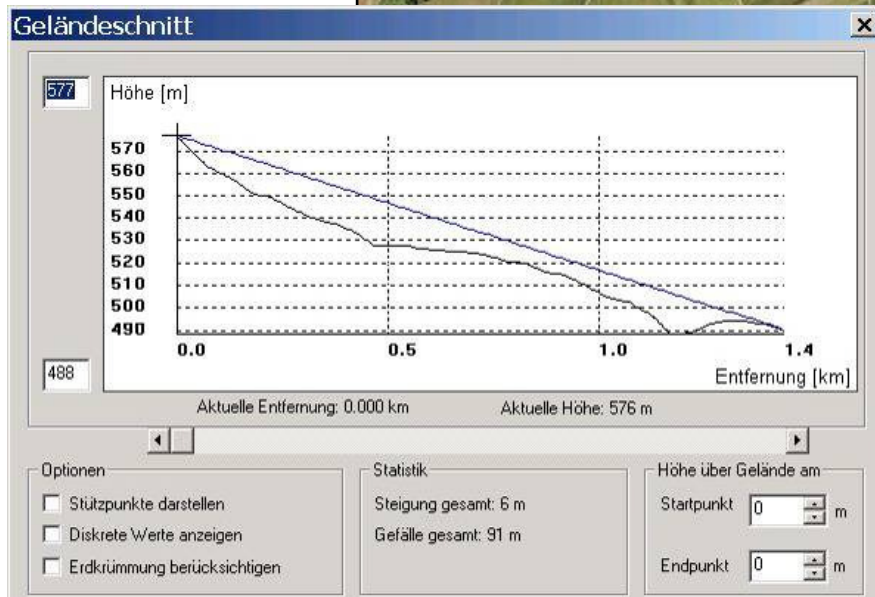


Deutscher  
Aero Club e.V.  
Sportfachgruppe Modellflug



new  
slope

$l = 1400 \text{ m}$   
 $h = 91 \text{ m}$

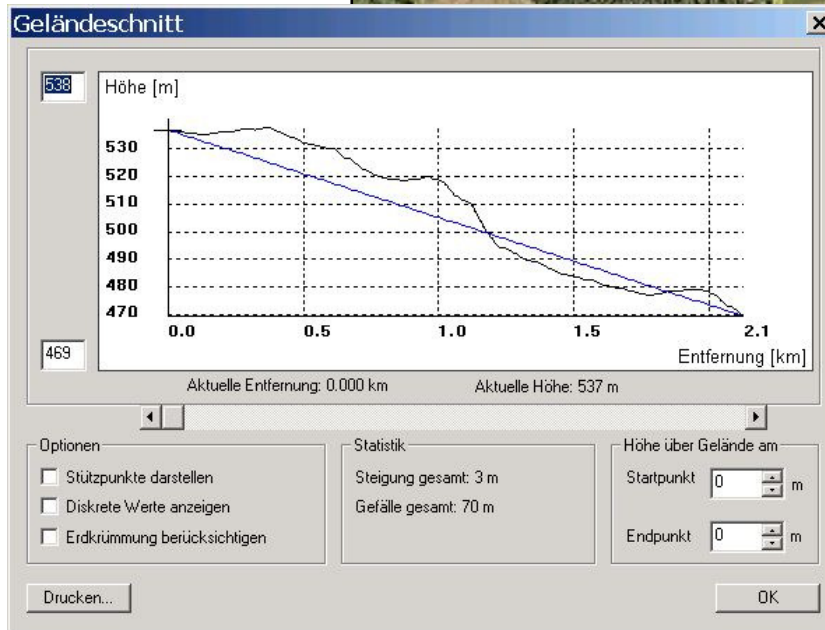


# Slope North 02



**new  
slope**

**$l = 1700 \text{ m}$   
 $h = 70 \text{ m}$**

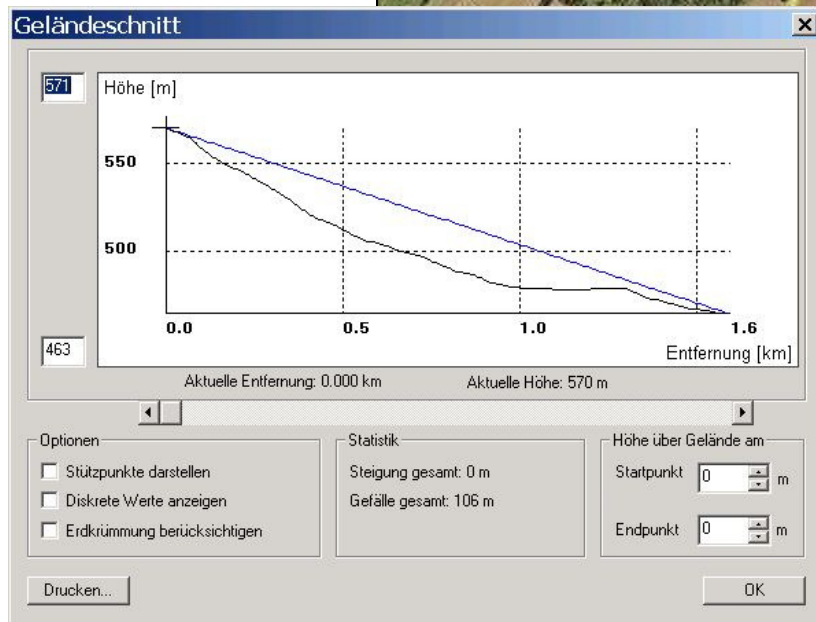


# Slope North 03



**new  
slope**

**$l = 1600 \text{ m}$   
 $h = 106 \text{ m}$**

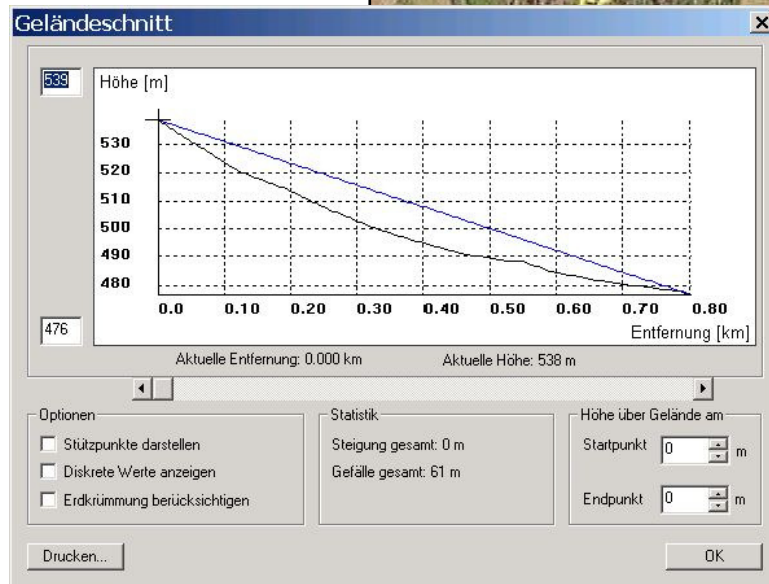


# Slope North West

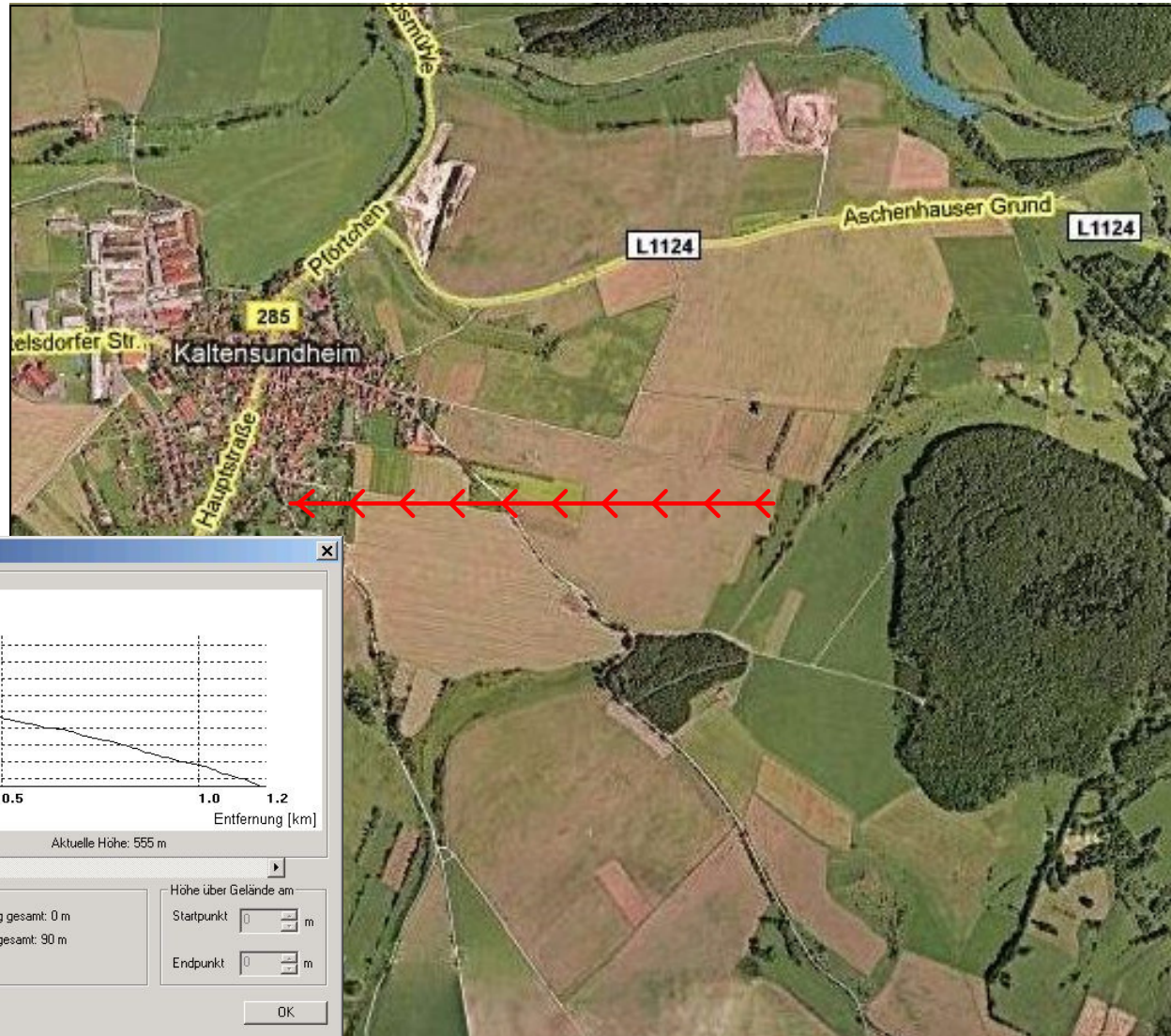


**Junior  
E/C '08**

**l = 800 m  
h = 61 m**

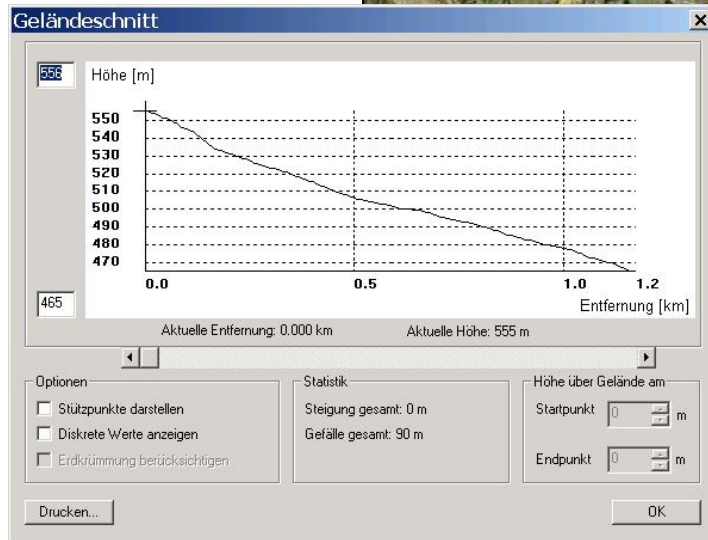


# Slope West



same site  
different  
direction

$l = 1\ 200\ m$   
 $h = 90\ m$

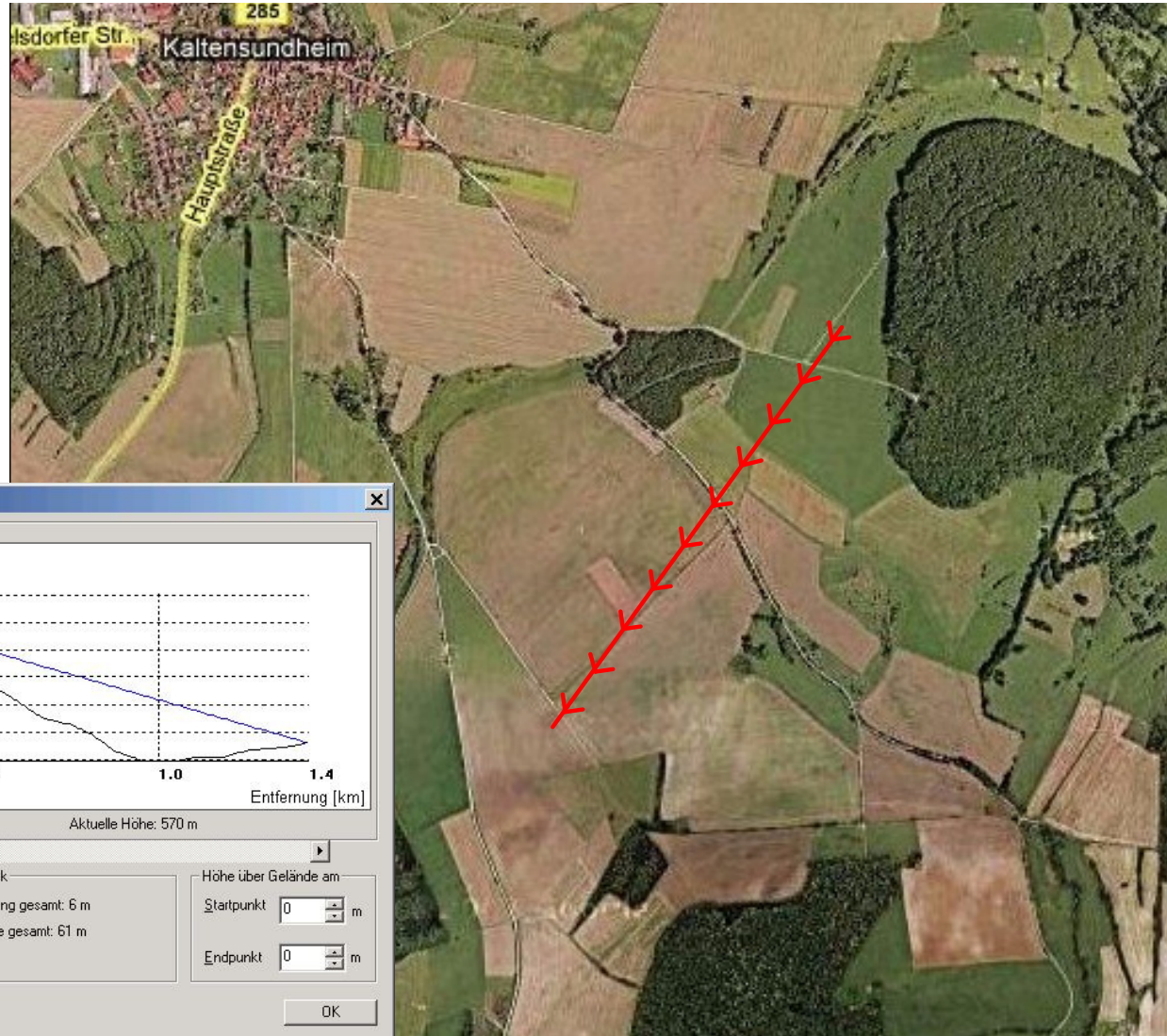




# Slope South West

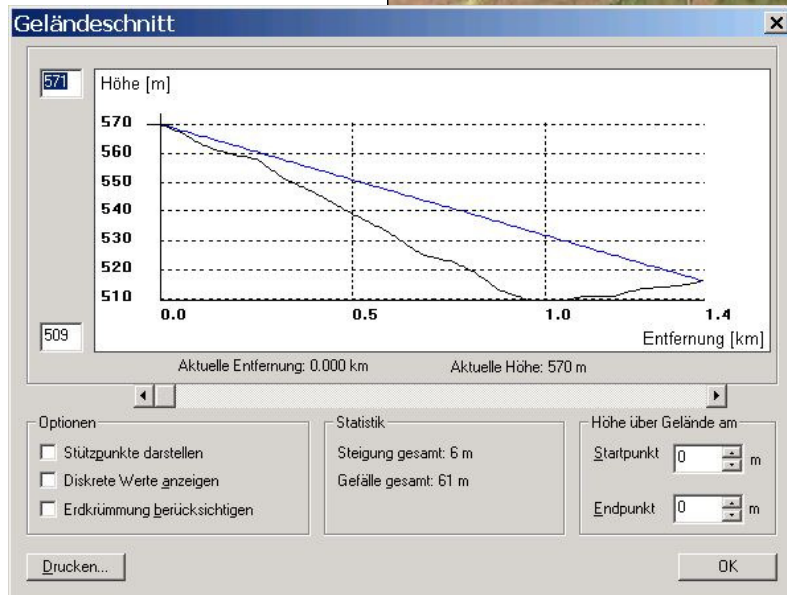


Deutscher  
Aero Club e.V.  
Sportfachgruppe Modellflug



German  
Champs  
2007

$l = 1\,400\text{ m}$   
 $h = 61\text{ m}$

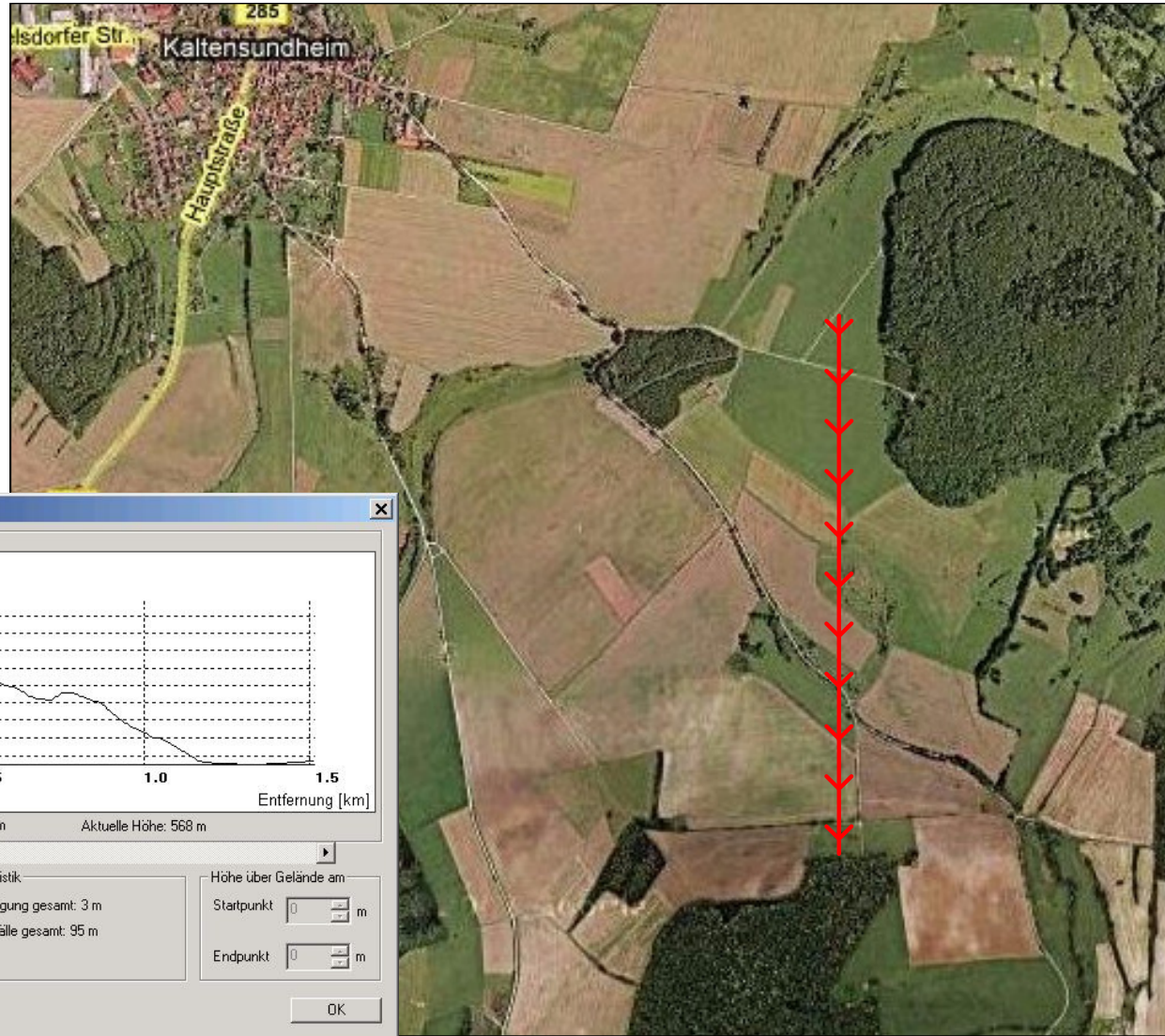




# Slope South 01

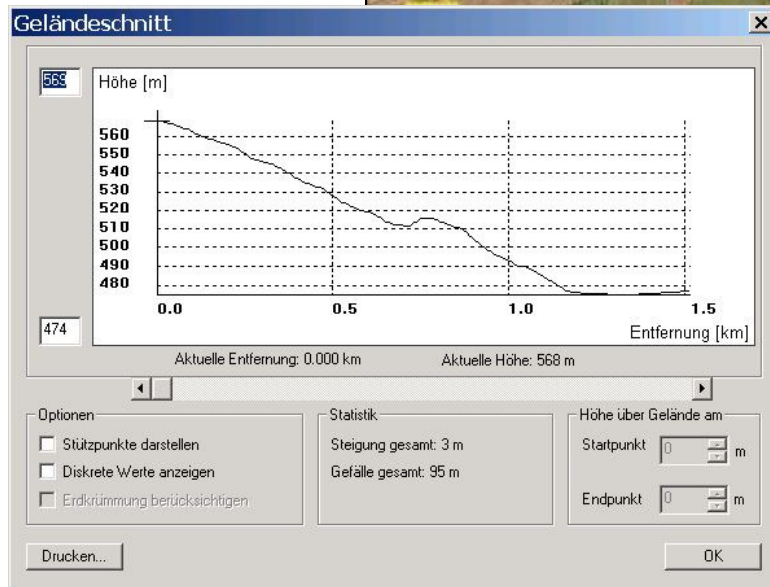


Deutscher  
Aero Club e.V.  
Sportfachgruppe Modellflug



**German  
Champs  
2007**

**$l = 1\,500\text{ m}$   
 $h = 95\text{ m}$**

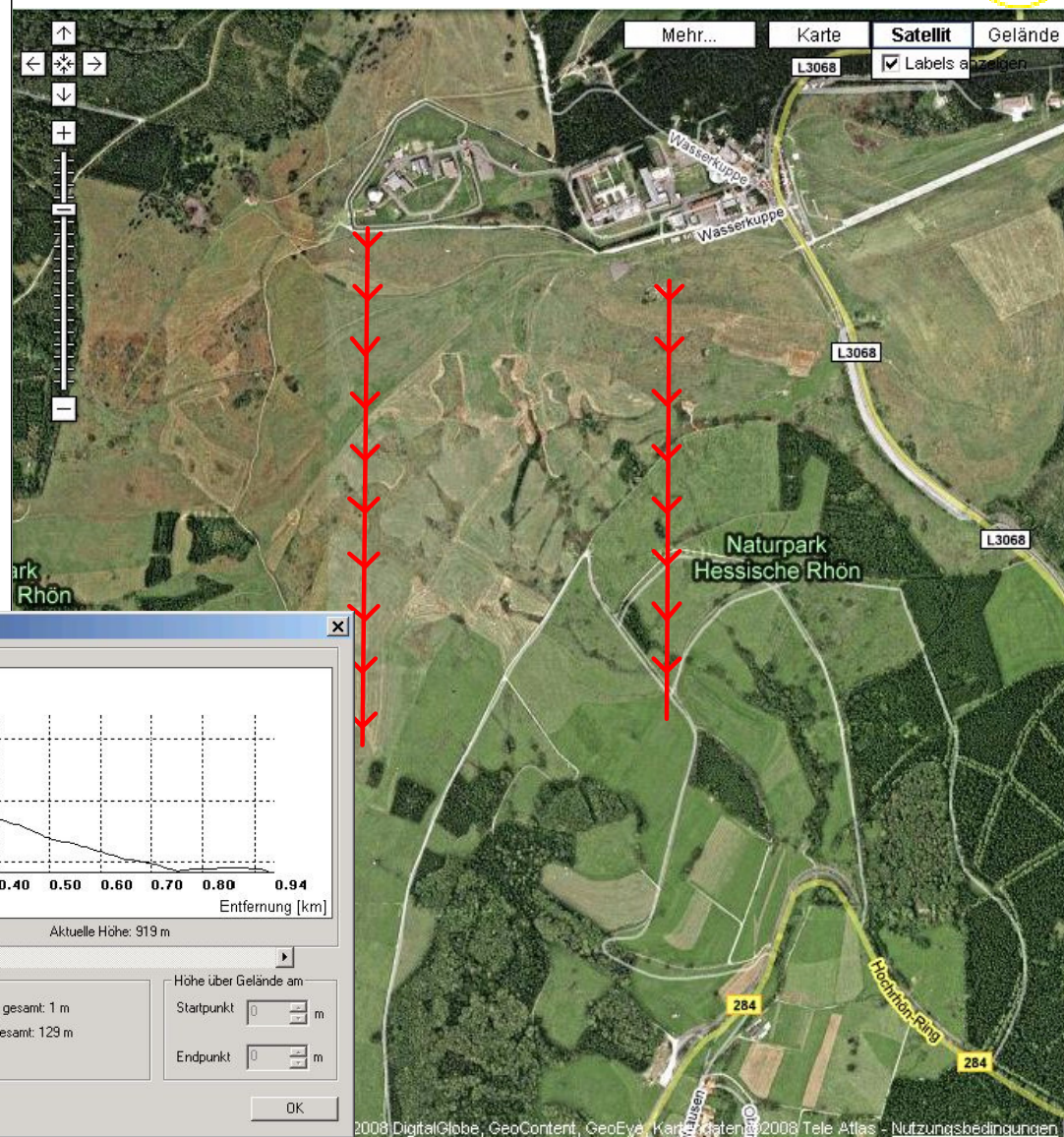




# Wasserkuppe Slope South 02



Deutscher  
Aero Club e.V.  
Sportfachgruppe Modellflug



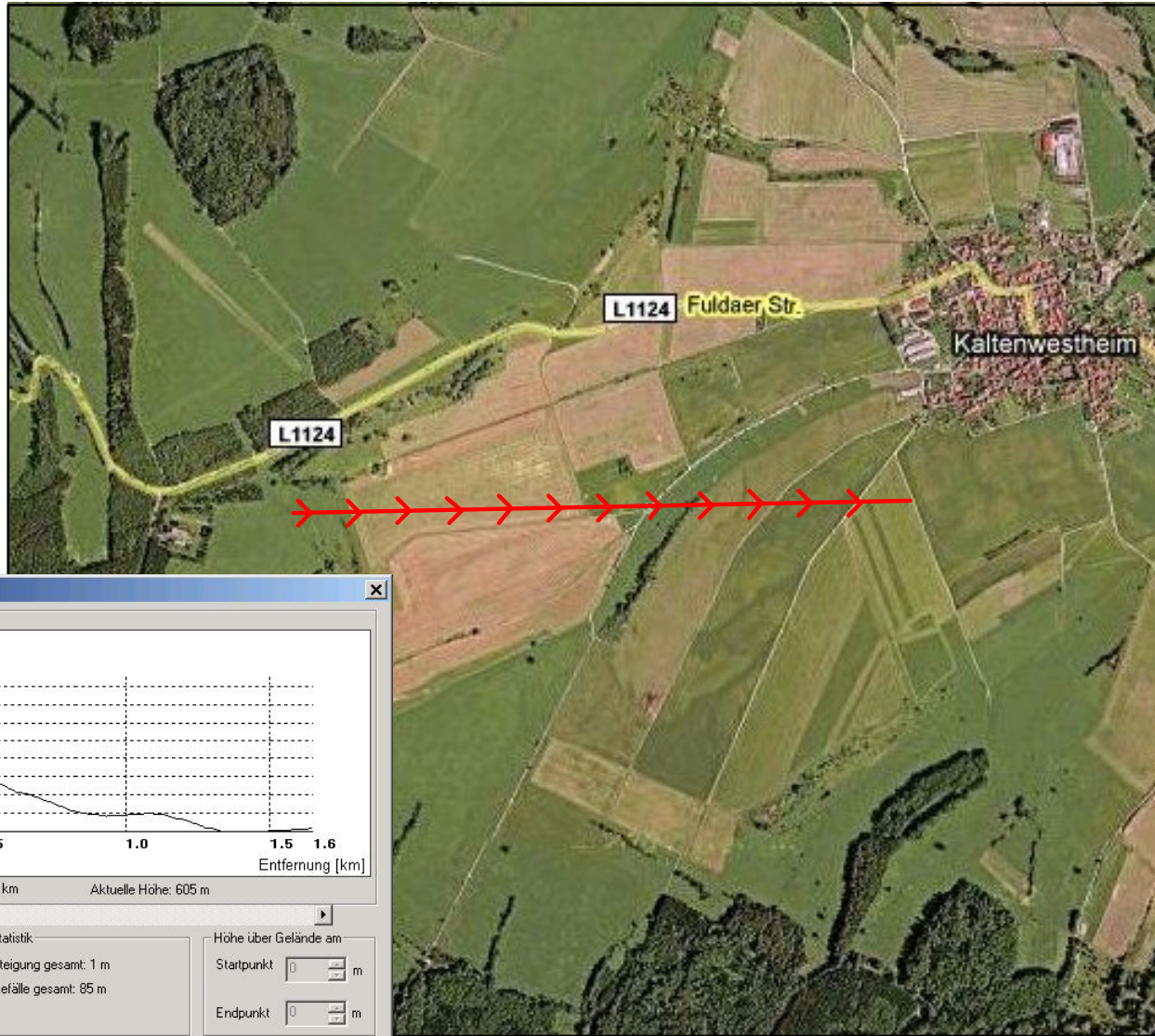
$l = 940 - 1300 \text{ m}$   
 $h > 100 \text{ m}$



# Slope East

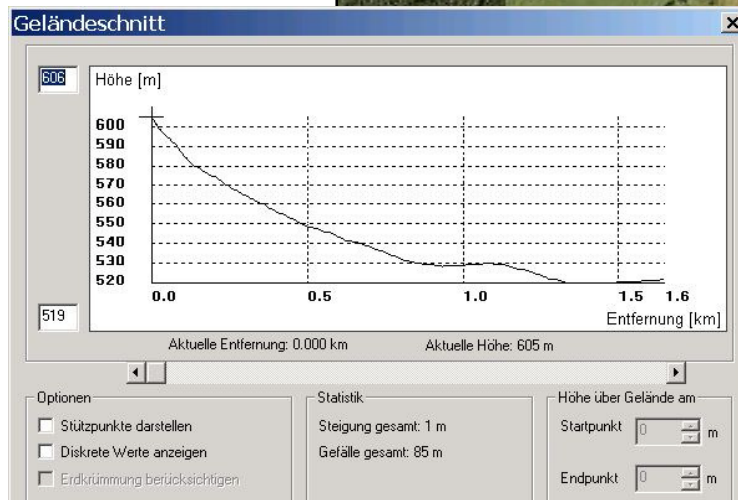


Deutscher  
Aero Club e.V.  
Sportfachgruppe Modellflug



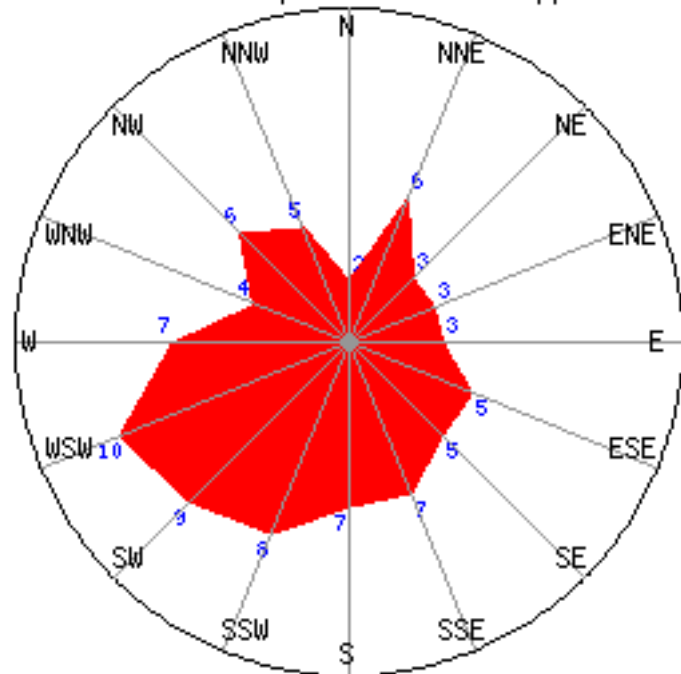
**Berner  
Worldcup  
2008**

**$l = 1\ 600\ m$   
 $h = 85\ m$**



## Direction of the wind on the Wasserkuppe

Winddir distrib. September Wasserkuppe



Copyright www.windfinder.com

Statistic for September

Dominant Wind Direction with 27% probability	WSW, SW, SSW
Wind probability [%] $\geq 5,5$ m/sec	47
Average Wind Speed [m/sec]	5,7
Average air temperature [°C]	13

Statements based on observation taken between 9/2003 – 10/2008 daily from 7am to 7pm local time - Source: www.windfinder.com



## Summary of the Slopes

	<b>Slope Length/Height</b>	<b>Direction</b>	<b>Comments</b>	<b>Site</b>
<b>1</b>	ca. 1.300 m 100 m – 180 m	south south-south-east south-south-west	“Weltenseglerhang” at the Wasserkuppe. Due to obstacles (forest) not suitable for the fly-off. Solution to choose a slope at Kaltensundheim for the fly-off.	Wasserkuppe
<b>2</b>	min. 1.500 m 60 m	south	Slope used for the German Champs 2007. Maximum time 300 sec without any problem.	Leichelberg (Kaltensundheim)
<b>3</b>	min. 1.400 m 60 m	south west	Slope used for Senior E/C 2008 and for German Champs 2007. Fly-off with 8 min in 2007 (2-4 m/s). No model was lost. No problems with time keeping, but shallow at the top.	Leichelberg (Kaltensundheim)
<b>4</b>	min. 1.200 m 90 m	west	Very suitable slope.	Leichelberg (Kaltensundheim)



5	min. 800 m 60 m	north west	Shortest slope. We flew this slope at the Junior E/C 2008. No model finished in the town.	Leichelberg (Kaltensundheim)
6	2.000m / 70 m  1.600m / 106 m  1.200m / 91m	north	We have 3 new possibilities for the north direction. The north slope used at the senior E/C 2008 (different to the three ones mentioned here) was too short and will be not used any longer.	Leichelberg (Kaltensundheim)
7		north east	For this wind direction the norths slope to be used. The statistics shows very low probability for "NE" wind.	
8	1.600 m 85 m	east	We flew this slope during the Worldcups 2008. F.W. personal time was 8 min (at sunrise 0-0,5 m/s) without reaching the village (300 meters). The starting point at the "Berner Wordcup" was too high and too much left.	Leichelberg (Kaltensundheim)